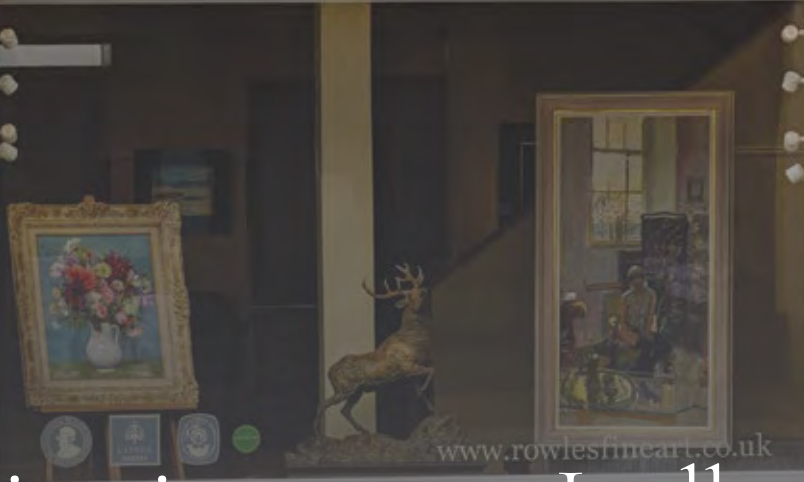


ROWLES  
FINE ART

# ROWLES FINE ART

53

19th - 21st Century Paintings • Bronze Sculpture



Visit us in picturesque Ludlow

New acquisitions arrive throughout the year at our gallery, please keep in touch and register with us for notifications on art and artists you follow.



# Helen Bradley

## OH, WHAT A PITY IT'S STARTING TO SNOW

Oil on Board | 24" x 28" | Signed & Dated 1971

"Oh what a pity it's starting to Snow ... which/meant that George & I & the dogs, Gyp & Barney would/miss our afternoon walk to the end of Spring/Lane to the Cemetery to look at the little white/angel. "Dear me" said Miss Carter (who wore Pink)/I think we'd better go home. Aunt Frances & Aunt/Charlotte offered to lend her an umbrella, but/Mr. Taylor (the Bank Manager) very gallantly offered/her his. "You must all call in for a cup of/Tea", said Mother, "and here's our New Curate and/dear Mrs Maitland and Emily, do please come/also" but George & I had seen Mrs Murgatroyd/with Willie & Annie. They had pea shooters and a/bag of peas each, but it wasn't the pea shooters which/made George cry. It was Willie saying he could hear/Billy Murphy's Tiger breathing quite close & it would/eat George up. "Nothing of the sort" said Grandma & Mrs/Murgatroyd boxed Willie's ears and the year was 1906/Helen Layfield Bradley 1971."



# Laurence Stephen Lowry R.A. 1887 - 1976

## **MAN WITH BOWLER HAT**

Pencil on Paper | 11.5" x 8"

Signed and dated 'LS Lowry 1960' (lower left)

Executed in 1960





Donald McIntyre

**SEA & ROCKS 4963**

Acrylic on Board | 12" x 16" | Signed



Marcel Dyf

**UN VILLAGE BRETON**

Oil on Canvas | 18.5" x 21.5" | Signed

Marcel Dyf 1899 - 1985



Marcel Dyf

**HOUSES BY CANAL**

Oil on Canvas | 18" x 22" | Signed

# Edgar Hunt 1876 - 1953



Edgar Hunt

**HENS & DOVES IN THE FARMYARD**

Oil on Canvas | 8" x 10" | Signed & Dated 1916



Edgar Hunt

**HENS & GOATS IN THE FARMYARD**

Oil on Canvas | 26" x 20" | Signed & Dated 1917



Eugene Galien Laloue

**MARCHÉ AUX FLEURS EN HIVER, LE THÉÂTRE DU CHÂTELET**

Watercolour & Gouache | 7.5" x 12" | Signed



David Gauld

**AYRSHIRE CATTLE**

Oil on Canvas | 24" x 34" | Signed



William Russell Flint

**AT THE WATERS EDGE**

Watercolour | 19" H x 26" W | Signed

# Edward Atkinson Hornel



Edward Atkinson Hornel

**SPRING BLOSSOM**

Oil on Canvas | 20" x 24" | Signed & Dated 1919 Lower Left



Edward Atkinson Hornel

**SPRING BLOSSOM**

*Shown alongside:*

Jonathan Knight

**THREE CURLEWS**

Signed Bronze Sculpture | Edition of 12

Dresser Base

**MONTGOMERYSHIRE ELM**

Mid 18th Century (Circa. 1760)



Peter Curling

**BUNCHING ON THE BEND**

Watercolour, Pen & Ink | 21.5" x 21" | Signed



Peter Biegel

**MACKESON GOLD CUP**

Oil on Canvas | 18" x 24" | Signed

Opposite:

## Helen Bradley

### **POOR AUNT CHARLOTTE BLUSHED AS SHE SANG**

Oil on Board | 24" x 30" | Signed & Dated 1965

"Poor Aunt Charlotte blushed as she sang .../at Grandma's on Sunday Evenings the aunts,/Miss Emily Maitland and Miss Carter (who wore Pink)/ took turns in singing, but poor Aunt Charlotte/had just reached her top note when she turned/bright pink and stopped. Father, who was playing/the violin stopped also and wondered what was/the matter. She had seen the New Curate, The/Rev. Albert Green, walking in behind Mother./ Father said, Come along, Lottie dear, that was/very nice, but she wouldn't continue. Miss Emily/Maitland finished the evening by singing, "Coming/ through the Rye". Mother is bringing Grandma's/gruel and George her piece of Toast, Mr Taylor (the/Bank Manager) is sitting next to Miss Maitland and/that evening we all thought him very attentive to dear/Emily and the year was 1907/Helen Layfield Bradley/1965."





John  
Cunningham  
1926 - 1998

**STILL LIFE OF FRUIT & FLOWERS**

Oil on Canvas | 32" x 28" | Signed





John Cunningham

**ANEMONES & FRUIT**

Oil on Canvas | 14" x 14" | Signed



John Cunningham

**STILL LIFE OF CARNATIONS**

Oil on Canvas | 14" x 14" | Signed

Available individually or as a pair.

Bronze Sculpture by

# Jonathan Knight



## **LONG TAILED TITS**

Bronze Sculpture | Edition of 12 | Signed & Numbered

Jonathan Knight

**WALKING BROWN BEAR**

Bronze Sculpture | Edition of 12

Signed & Numbered



Jonathan Knight

**FIVE SCREECH OWLS**

Bronze Sculpture | Edition of 12

Signed & Numbered





# Sheree Valentine-Daines

## CHILDREN PLAYING IN THE SHALLOWS

Oil on Canvas | 16" x 12" | 28" x 25" | Signed



## COMING INTO THE HOME STRAIGHT

Oil on Canvas

44" x 56" | Signed



# Steven Keating | Oils



Steven Keating

**PHEASANTS**

Oil on Canvas | 40" x 60" | Signed



## Clare Brownlow

### **SPARRING PHEASANTS**

Feather and Ink | 32" x 48" | Signed

"As ever the countryside erupted in colour this spring with the red and golds of sparring cock pheasants. All those years ago this was one of the first subjects I tackled with feather and ink."



Clare Brownlow

**MARCH HARES**

Feather and Ink | 32" x 48" | Signed

"Popular and fun to paint I love these Hares. Plentiful both here in the Borders and in Norfolk, I love watching these awesome animals."



Introducing British Sculptor

Tom Hiscocks



Tom Hiscocks

**CABALLO BEBEDOR IV, 2023**

Marine Grade Stainless Steel

Edition of 8 | 162cm x 30cm x 25cm





Tom Hiscocks

**EL TORO III, 2022**

316 Stainless Steel | Edition of 8

140cm x 40cm x 40cm

Rupert Till

**HORSE HEAD PLANTER**

Wire and Steel aged Zinc

5ft H X 2ft W | Signed



Bronze Sculpture by

# Knox Field

## **WARTHOG**

Bronze Sculpture | Edition of 12

12" H x 16.5" L | Signed & Numbered



Bronze Sculpture by

# Julia Wager

**FEARLESS HART**

Bronze Sculpture | Edition of 12  
27" H x 31" L | Signed & Numbered



# Edward Seago

1910 - 1974



Edward Seago  
**THE TURFMARKT DELFT**

Oil on Board | 12" x 16" | Signed



Edward Seago

**SPRITSAIL BARGE PUTTING TO SEA**

Oil on Board | 16" x 24" | Signed



# Elie Lambert

French Equestrian Artist

**JOCKEYS**

Oil on Canvas | 19.5" x 39.5" | Signed



John Lowrie Morrison  
JOLOMO

Above

**CALVE BEACH, ISLE OF IONA**

Acrylic on Board

12" x 12" | Signed

Left

**SANNA CROFTS ARDNAMURCHAN**

Acrylic on Board

24" x 24" | Signed & Dated 1999

Bronze Sculpture by

# Lucy Kinsella

## **LARGE HARE**

Bronze Sculpture | Edition of 12 | 13" H x 5.5" L

Signed & Numbered





Lucy Kinsella

**DACHSHUND**

Bronze Sculpture | Edition of 12 | Signed & Numbered



Jonathan Knight

**OTTER AT PLAY**

Bronze Sculpture | Edition of 12

13" H x 9"W | Signed & Numbered



ROWLES  
FINE ART



Tel: 01584 872123

[enquiries@rowlesfineart.co.uk](mailto:enquiries@rowlesfineart.co.uk)

[www.rowlesfineart.co.uk](http://www.rowlesfineart.co.uk)

53 Mill Street, Ludlow, Shropshire, SY8 1BB

Follow us:

