

ROWLES FINE ART

Established in 1982, Rowles Fine Art has become one of the leading UK galleries for art collectors passionate about wildlife bronze sculpture and 19th - 21st Century British and European paintings.

The bronze collection ranges from delicate table-top pieces to life-size and monumental sculpture, each one alive with the personality and inherent energy of the subject. All the bronzes are hand crafted, signed and numbered and cast in UK foundries.

Every sculptor represented by Rowles Fine Art is chosen for their raw talent, the expressive attention to detail and the emotional response their work generates.

Aswell as the wonderful bronzes in the Rowles portfolio our extensive collection of paintings appeals to an eclectic mix of tastes, embracing many styles and genres. On display are Victorian paintings by artists such as Edgar Hunt, Alfred De Breanski Snr, Antoine Bouvard Snr to 20th century artists Kyffin Williams, Helen Bradley and Marcel Dyf, and modern-day contemporary painters such as Ros Goody and Anthony Gibbs.





Grizzly Bear
Bronze | Edition of 12
Size - H: 10.5" x W: 12"

Jonathan Knight

Jonathan Knight's enchanting bronze animal sculptures have given him a wide collectorship amongst the connoisseurs of wildlife and equine art. He is widely recognized as one of the finest and most original wildlife and equine artists of his generation.

Jonathan grew up in London where he was born in 1954. He inherited many of his artistic leanings from his father, a graphic illustrator specialising in sporting art. After having survived the academic pressures of school and university life, his precocious early talent burst into flames in his mid-twenties through a lifelong passion for horses.

At the same time he was also engaged on several public commissions. His sculpture of the fantastic "Dawn Run" at Cheltenham racecourse and of "Music Boy" at Cheveley Park Stud in Newmarket are perfect examples of the artist's potential in that field.

Each sculpture is cast in editions of nine or twelve bronzes yet each is unique by virtue of the originality of its patination. Through the potentially destructive forces of fire and acid, Jonathan produces a patination which invigorates the bronzes with warmth and energy.

Unsurprisingly, Jonathan Knight's work now features in private collections throughout the world – notably in that of H.M. The Queen of England who chose a pair of curlews for her private collection.

All bronzes are signed and numbered. All sizes are approximate.



Woodcock
Bronze | Edition of 12
Size - H: 4" x W: 10"





Covey of Grouse
Bronze | Edition of 12
Set of 3
Approximate Size (each) - H: 5" x L: 9"



Puffin
Bronze | Edition of 12
Size - H: 9" x W: 7"





Avocets Preening
Bronze | Edition of 12
Size - H: 11" x W: 13"



Standing Otter
Bronze | Edition of 12
Size - H: 17" x W: 9.5" x L: 15.5"



Black Cock
Bronze | Edition of 12
Size - H: 13" x W: 16"



Sleeping Hippos
Bronze | Edition of 12
Size - H: 6" x W: 15" x L: 22"





Mandarin Duck
Bronze | Edition of 12
Size - H: 9" x W: 11.5"





Trio of Guinea Fowl
Bronze | Edition of 12 | Set of 3
Size - H: 3.5" x W: 9" (each)







Roe Deer
Bronze | Edition of 9
Size - H: 29" x W: 29"



Three Curlews
Bronze | Edition of 12
Size - H: 21.5" x W: 9" x L: 21"

Rhino
Bronze | Edition of 8
Size - H: 8" x W: 8" x L: 18"





Fox
Bronze | Edition of 12
Size - H: 7" x W: 14"





Eagle Owl
Bronze | Edition of 12
Size - H: 17.5" x W: 6.5"



Running Bear
Bronze | Edition of 12
Size - H: 10" x W: 16"



Wood Pigeon
Bronze | Edition of 12
Size - H: 11" x W: 7"



Sleeping Lapwing
Bronze | Edition of 12
Size - H: 9" x W: 10.5"





Tamworth Pig
Bronze | Edition of 12
Size - H: 12" x L: 20"





Resting Hare
Bronze | Edition of 12
Size - H: 10" x W: 18"

Pair of Lapwings
Bronze | Edition of 12
Size - H: 11" x W: 14"



Work in progress by Jonathan Knight

Available in 2014

Seated Brown Bear | Orangutan | Leopard Grooming







Tortoise
Bronze | Edition of 10
Size - H: 8" x W: 16"

Jemma Pearson

Jemma's fascination with the animal kingdom stemmed from the luck of a childhood growing up in the beautiful hills of Galloway in South West Scotland, with its wonderful quality of light and abundant wild life. If she was not swaying around in the tops of trees, she was swimming in local waterfalls with migrating eels.

Visits to a local privately owned collection of sculptures, including some by Rodin, Epstein and Moore, sparked her enthusiasm for sculpture.

Jemma trained at the City and Guilds of London Art School and then travelled on a scholarship to Rome winning the Madame Tussaud's Sculpture Prize.

Based upon her life long knowledge of long dogs, including greyhounds, lurchers, whippets and Italian greyhounds, she has interpreted their elegant, almost feline, sense of poise in sculptures that distill the essence of their line, curve and form. This is enabled by the freedom of carving, rather than modelling, the results are bronze sculptures of great balance with a very distinctive style.

Jemma receives many public and private commissions, both human portraiture and animal, and has built a reputation for her dedicated research. She is an artist who takes delight in the inclusion of observed detail in her portrait pieces. An example of this with powerful results is her over life-size statue of Charles Darwin for Shrewsbury School.

All bronzes are signed and numbered. All sizes are approximate.

Italian Greyhound Curled
Bronze | Edition of 10
Size - H: 7" x W: 9.5"





Italian Greyhound Elongated
Bronze | Edition of 10
Size - H: 8.5" x W: 8.5" x L: 16"





Whippet Heads
Bronze | Edition of 10
Size - H: 10" x W: 14"



Charles Darwin
Bronze | Edition of 40
Size - H: 15" x W: 8"



Elgar
Bronze | Edition of 15
Size - H: 8.5" x W: 14"



“Animation is so important to my work that I focus hard on bringing out the sitter’s natural expression and their full range of facial mannerisms.”

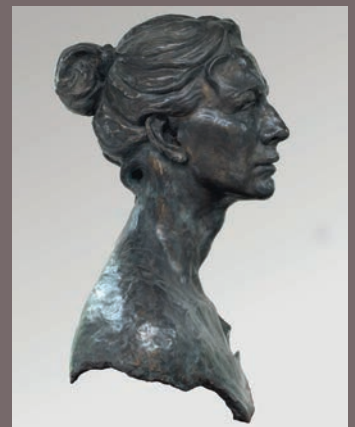
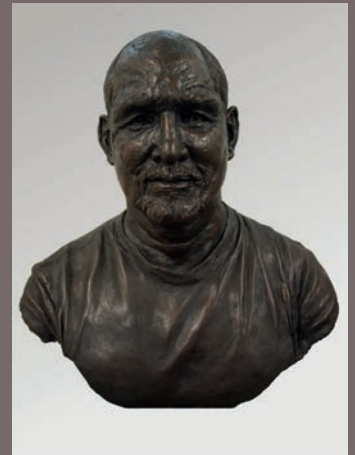
Commissioning a Portrait by Jemma Pearson

Much needs to be considered when commissioning a bronze portrait sculpture, many people have their own specific ideas, be it traditional or contemporary which they may develop with Jemma during the initial stages, others prefer to offer a free reign for Jemma to create a piece in her own unique style.

A portrait head or bust can usually take between 4 and 6 months from start to delivery depending upon the availability of the sitter and Jemma as well as the complexity of the piece. The process involves an initial session of about 2 hours to measure, sketch and photograph, followed by a further 4 to 5 sittings, each lasting around 2 hours.

The sittings usually take place either in Jemma’s Shropshire studio or at the client’s home, but there is always flexibility depending on the client’s personal requirements. Experience suggests that a familiar home environment is often the most relaxing and natural setting, and where sitters are most themselves. The subject is not required to remain immobile or to ‘freeze’ in a pose which can be very wearing, on the contrary, animation is so important in Jemma’s work that she focusses hard on bringing out the sitter’s natural expression and their full range of facial mannerisms. Chatting from a comfortable chair in a quiet, well lit room with regular breaks and refreshments is the order of the day!

When the original clay work is finished and approved it is taken to the foundry to be cast into bronze. The client is welcome to follow the more technical stages of the process with visits to the foundry if they wish. Seeing the bronze take shape is often a fascinating and enjoyable experience for many. Details such as patination colour are agreed with the client at this point, as well as options for a plinth or a base. Jemma also takes commissions for garden sculpture.



If you would like further information on commissioning a Jemma Pearson bronze portrait, please do get in touch.





Cantering Horse
Bronze | Edition of 9
Size - H: 11.5" x W: 25"

Lucy Kinsella

Born in Hampshire in 1960, Kinsella moved to Leicestershire where she gained a BA Hons in sculpture at Loughborough University. She was awarded the Dante Alighieri Travelling Scholarship which took her to Florence, and the Dennis Holt Travelling Bursary spent in southern Ireland.

After graduating, Kinsella determined to develop her skills as an animal sculptor, drawing inspiration from Barye, Degas and Bugatti, and the contemporary work of Jonathan Kenworthy.

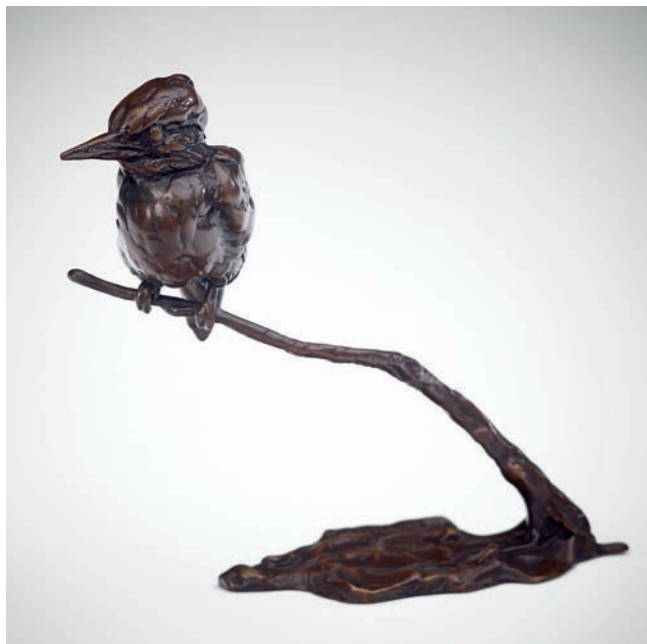
Kinsella's work ranges from delicate table-top bronzes to life-size and monumental sculpture. Maquettes modelled directly in wax offer her simple but effective means of viewing composition and structure. Larger pieces are worked in clay with a bold, spontaneous treatment of the surface. Kinsella's trademark lies in the expressive handling and fine detailing that captures the movement and energy of her chosen subject.

Kinsella's work is held in many private and public collections both in the UK and around the world, including France, Belgium, Sweden, Ireland, United States, South Africa, China, Japan and United Arab Emirates.

All bronzes are signed and numbered. All sizes are approximate.

Waiting Hare
Bronze | Edition of 20
Size - H: 6.3" x W: 6.3"





Kingfisher
Bronze | Edition of 20
Size - H: 6" x W: 7"

Owl
Bronze | Edition of 20
Size - H: 8.5" x W: 6" x L:4"

Chicken and Egg
Bronze | Edition of 20
Size - H: 4" x W: 5.3"

Rolling Dachshund
Bronze | Edition of 20
Size - H: 2" x L: 5"

Pig
Bronze | Edition of 20
Size - H: 3.5" x W: 3.5"





Platypus
Bronze | Edition of 20
Size - H: 5.5" x W: 6"



Bunched Terrier
Bronze | Edition of 20
Size - H: 3.3" x W: 6.5"



Running Rooster
Bronze | Edition of 20
Size - H: 6" x W: 7.5"

Border Leicester Ram
Bronze | Edition of 9
Size - H: 8.5" x W: 15"



Flying Pheasant
Bronze | Edition of 20
Size - H: 4" x W: 5.5"



Young Elephant
Bronze | Edition of 9
Size - H: 15.5" x W: 18"



Standing Pheasant
Bronze | Edition of 20
Size - H: 5" x W: 4"

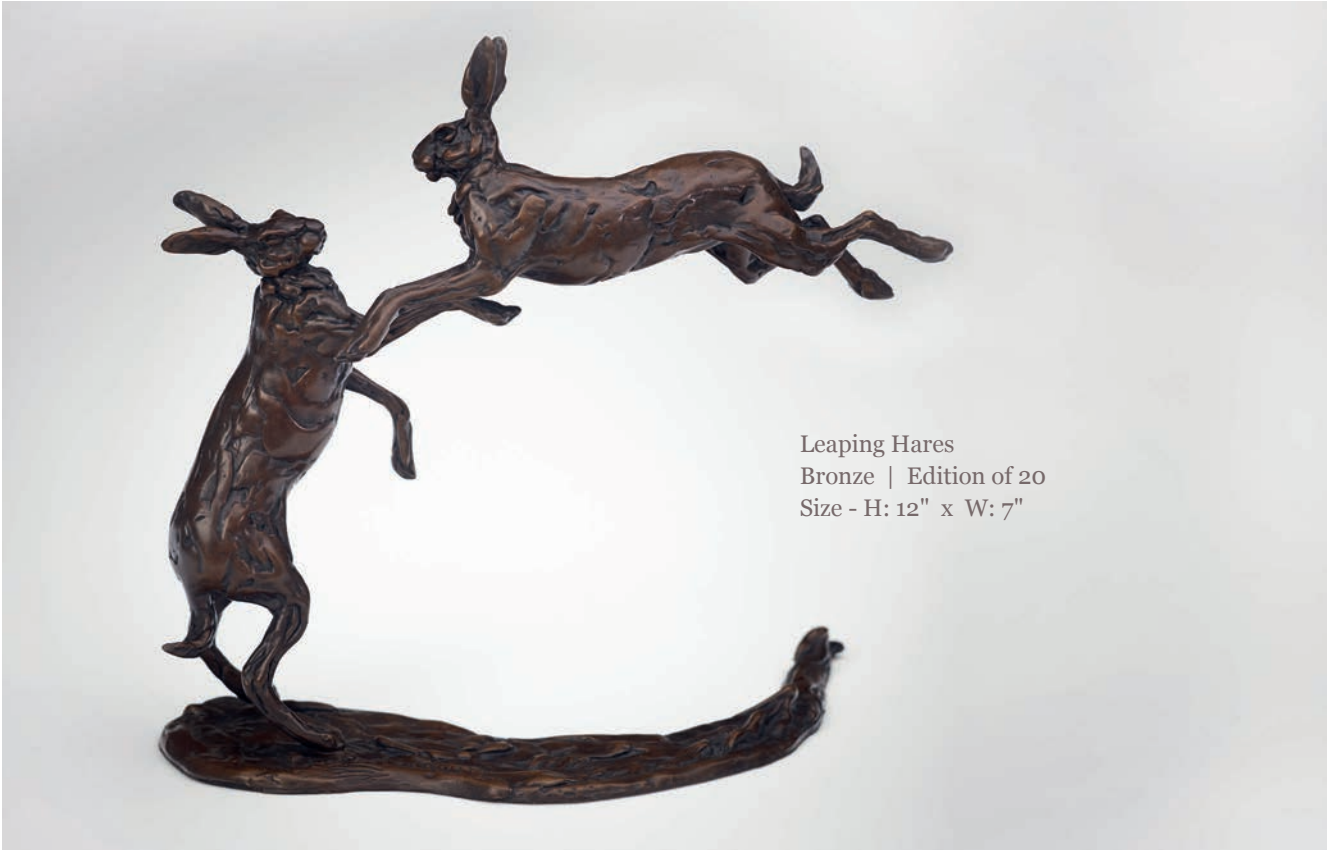




Seated Baboon
Bronze | Edition of 12
Size - H: 16" x W: 10"



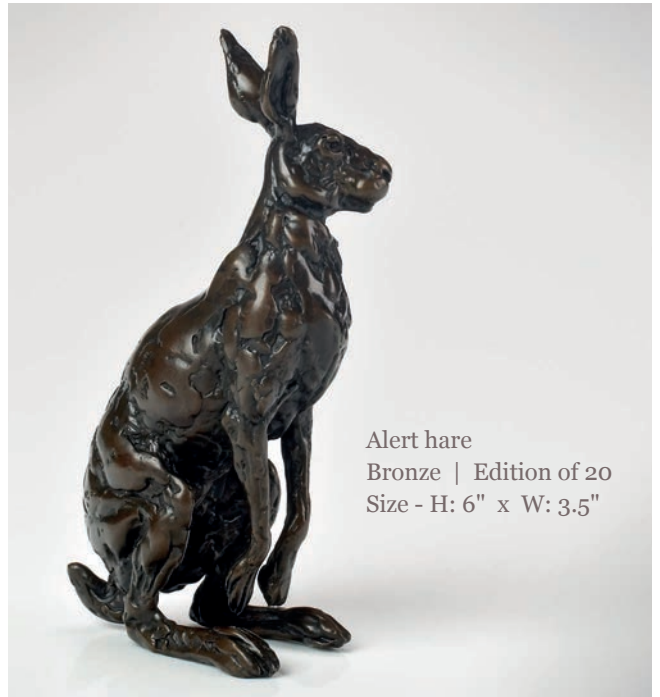
Bunched Greyhound
Bronze | Edition of 20
Size - H: 5" x W: 12"



Leaping Hares
Bronze | Edition of 20
Size - H: 12" x W: 7"



Boxing Hares
Bronze | Edition of 20
Size - H: 8" x W: 9"



Alert hare
Bronze | Edition of 20
Size - H: 6" x W: 3.5"

Pair of Hounds
Bronze | Edition of 20
Size - H: 5" x L: 11.5"



Patterdale Terrier
Bronze | Edition of 20
Size - H: 3" x L: 4"





Slow Canter
Bronze | Edition of 20
Size - H: 7.5" x W: 15"



Great Crested Grebe
Bronze | Edition of 25
Size - H: 3.5" x W: 15"

Leaping Lurchers
Bronze | Edition of 20
Size - H: 9" x L: 11"



Frog on Lily
Bronze | Edition of 20
Size - H: 5.5" x W: 11"



Bounding Hare
Bronze | Edition of 12
Size - H: 16.5" x L: 33"



Nanuck Polar Bear
Bronze | Edition of 12
Size - H: 16" x W: 10.5"







Silver Salmon
Silver Sculpture | Edition of 9
Size - L: 25" (Life-size)

David Williams-Ellis

David Williams-Ellis is one of the world's foremost figurative sculptors. He works primarily in clay from life and casts in bronze, glass and silver, drawing on a classical tradition but giving the sculptures his own contemporary feel. The balance and poise of his work is unique.

"I need my sculptures to live and breathe, they have to be powerful with their own energy and movement. My aim is to create art that you want to enjoy and revisit, to experience something new each time. The ability to translate the absolute essence of what I see in other people is paramount to my sculptures."

The innovative life-size busts and commissions that have earned David international recognition can be found in private and public collections worldwide.

All bronzes are signed and numbered. All sizes are approximate.

Rebecca
Bronze Sculpture | Edition of 9
Life-size





Penelope
Bronze Sculpture | Edition of 9
Life-size



Amy II
Bronze Sculpture | Edition of 9
Life-size



Helen on Rooftop
Bronze Sculpture | Edition of 9
Life-size

Silver Trout
Silver Sculpture | Edition of 9
Size - L: 13"



Umbrella Girl
Work in progress
Bronze | Edition of 9
Size - H: 31"





Hat Girls
Bronze | Edition of 9
Available as singles or a pair.
Size - H: 23.5"



Rebecca
Bronze Sculpture | Edition of 9
Size - H: 18"



Amy I
Bronze Sculpture | Edition of 9
Life-size





‘The Emperor of Exmoor’
Red Deer Stag
Bronze | Edition of 12
Size - H: 16" x W: 14"

Nick Bibby

Nick Bibby is acclaimed as one of the leading wildlife sculptors of his generation.

Born in County Durham in 1960, Nick has always been fascinated by the natural world. His talent was evident at an early age and he began sculpting commercially at sixteen. By nineteen he was a director of a leading miniature figurines company. More success followed as he went on to work as chief design consultant for a French art company, and then as a sculptor and model maker for television and stills advertising in London.

Nick, returning to his first love the natural world, began working in bronze in 1991. His first piece, a Kingfisher, was hugely popular and sold out in a matter of weeks. Nick has a deep appreciation and understanding of the anatomy and form of his subjects, and an astonishing ability to render natural textures, fluid movement and character in his pieces. His depictions of nature have seldom been equalled for their sensitivity and beauty.

Nick has a global following including, major collectors, international governments and famous artists. His sculptures range from monumental to miniature, but all show an exquisite attention to detail.

Nick now lives and sculpts in Devon, a place he loves, and which provides constant inspiration.

All bronzes are signed and numbered. All sizes are approximate.



Devon & Cornwall
Long Wool Ram
Bronze | Edition of 12
Size - H: 11" x L: 12"



'Eric'
Highland Bull
Bronze | Edition of 12
Size - H: 14" x L: 18"



Elephant Seal II
Bronze | Edition of 12
Size - H: 12" x W: 14"

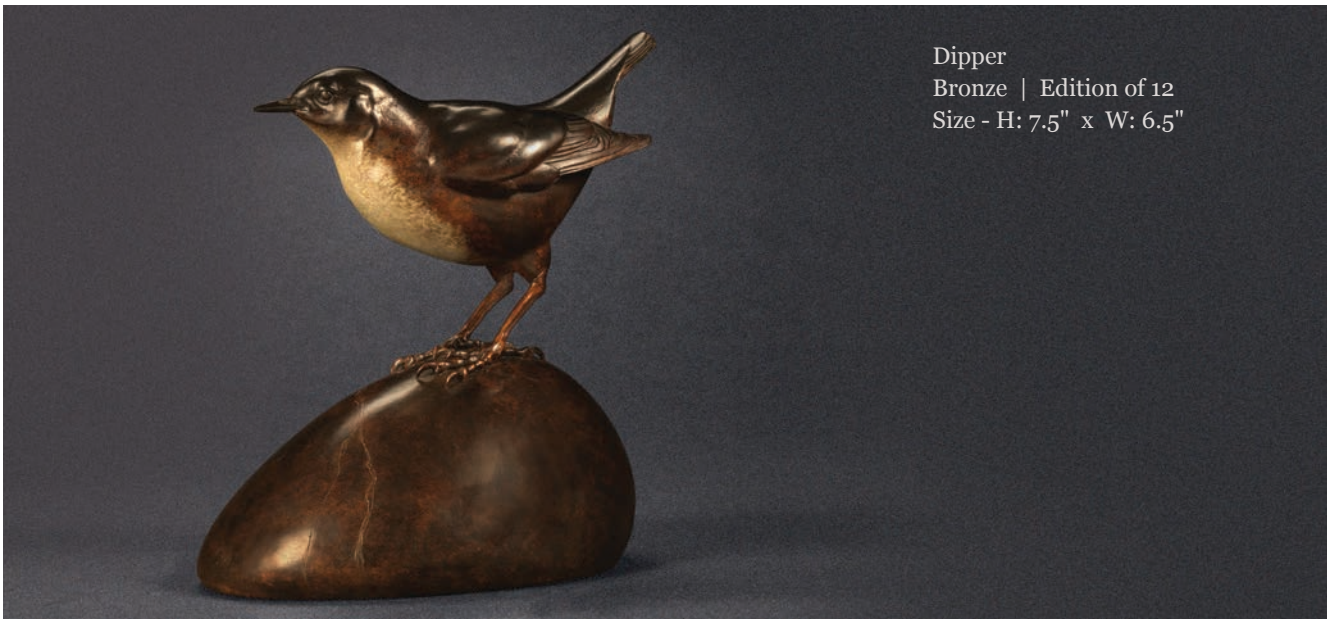


Hedgehog
Bronze | Edition of 12
Size - H: 4.5" x L: 9.5"





Bantam Old English Game Cock
Bronze | Edition of 12
Size - H: 20" x W: 14"



Dipper
Bronze | Edition of 12
Size - H: 7.5" x W: 6.5"



Stephen. J. Winterburn

Life-size Baby Elephant
Bronze | Edition of 6
Size - H:45" x W: 35" x L: 44"

Steve Winterburn is a self-taught artist whose creative development has been fuelled by his conviction, immense energy and curiosity. Possessing an innate comprehension of engineering and design enables him to explore his passion for challenge and experimentation.

Steve began teaching himself to sculpt in 1994, sparking an ambition to personally shape each piece of his work from concept to completion. He had entrusted the casting of his earlier bronzes to the established foundries. But the delays in delivering his work became frustrating and he was disillusioned by the changes that resulted from not handling the finishing stages himself.

In 2002 Steve moved to Yorkshire, and began converting the vast workshop next to his house in to the current nine-room studio and foundry.

Involvement with a diversity of initiatives has taken Steve to India, Peru, Kenya, Tanzania, Rwanda, Australia and Ethiopia, sculpting people and animals. His sculptures have been auctioned at Christie and Sotheby's and Monaco Fine Arts sell Steve's work in Monte Carlo. He has been invited to Buckingham Palace for sittings to sculpt a portrait of the Duke of Edinburgh.

Steve has spent the past few months designing and sculpting maquettes for a new project - the Welsh Dragon. This commission is intended to be on a par with the Angel of the North, and will be situated in Wales

All bronzes are signed and numbered. All sizes are approximate.



Modern English Hound
Bronze | Edition of 8
Size - H: 17" x L: 26"



Bull Elephant
Bronze | Edition of 8
Size - H: 17" x L: 26"



Three Turtles
Bronze | Edition of 8
Size - H: 22" x W: 10"



Mother & Baby Indian Elephant
Bronze | Edition of 8
Size - H: 12" x W: 7" x L: 24"